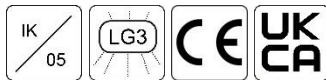
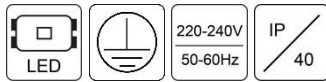
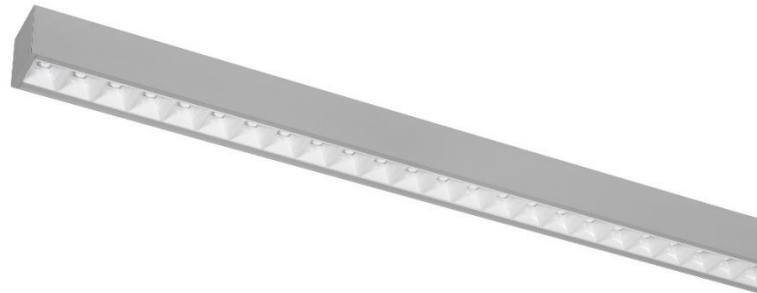


DECOR LP LED

Aluminium Profile Luminaires



Description:

Suspended middle profile LED luminaire for in-line connection without gaps
 Light distribution type: direct/indirect
 Optical system: double parabolic reflector with lenses, low glare
 Housing: aluminium
 Colour: light grey, RAL9006S

General data:

Mains voltage: 220-240V, 0/50-60Hz
 LED lifetime, h: 100000/L80B10
 SDCM: 3
 Protection class IEC: I
 Ingress protection code: IP40
 Mechanical impact resistance: IK05
 Operating temperature range, °C: ta 0...+35

Installation:

Suspended (wire, cable and cap to be ordered separately), with L/LL option is designed for in-line connection. Push-in terminal, 3x2x2,5mm²

Environment:

Indoor

Application:

Office, education, retail, public place

Product	Length, mm	Width, mm	Height, mm	Luminaire output*, lm	System power*, W	System efficacy*, lm/W	CRI* (Ra)	CCT*, K	Weight, kg
DECOR LP LED1x2950/1050 J322 T830 WGC LG3 LO1	1134	58	75	3769	25,5	148	80+	3000	2,7
DECOR LP LED1x3600/1300 J323 T830 WGC LG3 LO2	1134	58	75	4627	32,2	144	80+	3000	2,7
DECOR LP LED1x4250/1550 J324 T830 WGC LG3 LO3	1134	58	75	5453	38,5	142	80+	3000	2,7
DECOR LP LED1x4900/1800 J325 T830 WGC LG3 LO4	1134	58	75	6290	45,3	139	80+	3000	2,7
DECOR LP LED1x3650/1300 J326 T830 WGC LG3 LO1	1413	58	75	4662	31,8	147	80+	3000	3,2
DECOR LP LED1x4500/1550 J327 T830 WGC LG3 LO2	1413	58	75	5722	39,7	144	80+	3000	3,2
DECOR LP LED1x5300/1850 J328 T830 WGC LG3 LO3	1413	58	75	6744	48,0	141	80+	3000	3,2
DECOR LP LED1x6150/2100 J329 T830 WGC LG3 LO4	1413	58	75	7837	56,1	140	80+	3000	3,2
DECOR LP LED1x5850/2100 J330 T830 WGC LG3 LO1	2250	58	75	7538	49,9	151	80+	3000	5,3
DECOR LP LED1x7200/2600 J331 T830 WGC LG3 LO2	2250	58	75	9253	62,3	149	80+	3000	5,3
DECOR LP LED1x8450/3050 J332 T830 WGC LG3 LO3	2250	58	75	10906	75,3	145	80+	3000	5,3
DECOR LP LED1x9750/3550 J333 T830 WGC LG3 LO4	2250	58	75	12580	88,8	142	80+	3000	5,3
DECOR LP LED1x7300/2550 J334 T830 WGC LG3 LO1	2808	58	75	9323	61,6	151	80+	3000	6,6
DECOR LP LED1x9000/3100 J335 T830 WGC LG3 LO2	2808	58	75	11443	77,7	147	80+	3000	6,6
DECOR LP LED1x10600/3650 J336 T830 WGC LG3 LO3	2808	58	75	13488	94,0	143	80+	3000	6,6
DECOR LP LED1x12300/4250 J337 T830 WGC LG3 LO4	2808	58	75	15675	111,1	141	80+	3000	6,6
DECOR LP LED1x2950/1050 J322 T840 WGC LG3 LO1	1134	58	75	3966	25,5	156	80+	4000	2,7
DECOR LP LED1x3600/1300 J323 T840 WGC LG3 LO2	1134	58	75	4868	32,2	151	80+	4000	2,7
DECOR LP LED1x4250/1550 J324 T840 WGC LG3 LO3	1134	58	75	5738	38,5	149	80+	4000	2,7
DECOR LP LED1x4900/1800 J325 T840 WGC LG3 LO4	1134	58	75	6618	45,3	146	80+	4000	2,7
DECOR LP LED1x3650/1300 J326 T840 WGC LG3 LO1	1413	58	75	4905	31,8	154	80+	4000	3,2
DECOR LP LED1x4500/1550 J327 T840 WGC LG3 LO2	1413	58	75	6021	39,7	152	80+	4000	3,2
DECOR LP LED1x5300/1850 J328 T840 WGC LG3 LO3	1413	58	75	7095	48,0	148	80+	4000	3,2
DECOR LP LED1x6150/2100 J329 T840 WGC LG3 LO4	1413	58	75	8247	56,1	147	80+	4000	3,2
DECOR LP LED1x5850/2100 J330 T840 WGC LG3 LO1	2250	58	75	7932	49,9	159	80+	4000	5,3
DECOR LP LED1x7200/2600 J331 T840 WGC LG3 LO2	2250	58	75	9737	62,3	156	80+	4000	5,3

Product	Length, mm	Width, mm	Height, mm	Luminaire output*, lm	System power*, W	System efficacy*, lm/W	CRI* (Ra)	CCT*, K	Weight, kg
DECOR LP LED1x8450/3050 J332 T840 WGC LG3 LO3	2250	58	75	11476	75,3	152	80+	4000	5,3
DECOR LP LED1x9750/3550 J333 T840 WGC LG3 LO4	2250	58	75	13237	88,8	149	80+	4000	5,3
DECOR LP LED1x7300/2550 J334 T840 WGC LG3 LO1	2808	58	75	9810	61,6	159	80+	4000	6,6
DECOR LP LED1x9000/3100 J335 T840 WGC LG3 LO2	2808	58	75	12041	77,7	155	80+	4000	6,6
DECOR LP LED1x10600/3650 J336 T840 WGC LG3 LO3	2808	58	75	14192	94,0	151	80+	4000	6,6
DECOR LP LED1x12300/4250 J337 T840 WGC LG3 LO4	2808	58	75	16494	111,1	148	80+	4000	6,6
DECOR LP LED1x2700/1050 J322 T830 BGC LG3 LO1	1134	58	75	3556	25,5	139	80+	3000	2,7
DECOR LP LED1x3350/1300 J323 T830 BGC LG3 LO2	1134	58	75	4366	32,2	136	80+	3000	2,7
DECOR LP LED1x3900/1550 J324 T830 BGC LG3 LO3	1134	58	75	5145	38,5	134	80+	3000	2,7
DECOR LP LED1x4500/1800 J325 T830 BGC LG3 LO4	1134	58	75	5935	45,3	131	80+	3000	2,7
DECOR LP LED1x3400/1300 J326 T830 BGC LG3 LO1	1413	58	75	4395	31,8	138	80+	3000	3,2
DECOR LP LED1x4150/1550 J327 T830 BGC LG3 LO2	1413	58	75	5395	39,7	136	80+	3000	3,2
DECOR LP LED1x4900/1850 J328 T830 BGC LG3 LO3	1413	58	75	6359	48,0	132	80+	3000	3,2
DECOR LP LED1x5700/2100 J329 T830 BGC LG3 LO4	1413	58	75	7389	56,1	132	80+	3000	3,2
DECOR LP LED1x5400/2100 J330 T830 BGC LG3 LO1	2250	58	75	7112	49,9	143	80+	3000	5,3
DECOR LP LED1x6650/2600 J331 T830 BGC LG3 LO2	2250	58	75	8730	62,3	140	80+	3000	5,3
DECOR LP LED1x7800/3050 J332 T830 BGC LG3 LO3	2250	58	75	10290	75,3	137	80+	3000	5,3
DECOR LP LED1x9000/3550 J333 T830 BGC LG3 LO4	2250	58	75	11869	88,8	134	80+	3000	5,3
DECOR LP LED1x6750/2550 J334 T830 BGC LG3 LO1	2808	58	75	8790	61,6	143	80+	3000	6,6
DECOR LP LED1x8300/3100 J335 T830 BGC LG3 LO2	2808	58	75	10789	77,7	139	80+	3000	6,6
DECOR LP LED1x9750/3650 J336 T830 BGC LG3 LO3	2808	58	75	12717	94,0	135	80+	3000	6,6
DECOR LP LED1x11350/4250 J337 T830 BGC LG3 LO4	2808	58	75	14778	111,1	133	80+	3000	6,6
DECOR LP LED1x2700/1050 J322 T840 BGC LG3 LO1	1134	58	75	3741	25,5	147	80+	4000	2,7
DECOR LP LED1x3350/1300 J323 T840 BGC LG3 LO2	1134	58	75	4592	32,2	143	80+	4000	2,7
DECOR LP LED1x3900/1550 J324 T840 BGC LG3 LO3	1134	58	75	5413	38,5	141	80+	4000	2,7
DECOR LP LED1x4500/1800 J325 T840 BGC LG3 LO4	1134	58	75	6243	45,3	138	80+	4000	2,7
DECOR LP LED1x3400/1300 J326 T840 BGC LG3 LO1	1413	58	75	4624	31,8	145	80+	4000	3,2
DECOR LP LED1x4150/1550 J327 T840 BGC LG3 LO2	1413	58	75	5676	39,7	143	80+	4000	3,2
DECOR LP LED1x4900/1850 J328 T840 BGC LG3 LO3	1413	58	75	6689	48,0	139	80+	4000	3,2
DECOR LP LED1x5700/2100 J329 T840 BGC LG3 LO4	1413	58	75	7774	56,1	139	80+	4000	3,2
DECOR LP LED1x5400/2100 J330 T840 BGC LG3 LO1	2250	58	75	7483	49,9	150	80+	4000	5,3
DECOR LP LED1x6650/2600 J331 T840 BGC LG3 LO2	2250	58	75	9186	62,3	147	80+	4000	5,3
DECOR LP LED1x7800/3050 J332 T840 BGC LG3 LO3	2250	58	75	10826	75,3	144	80+	4000	5,3
DECOR LP LED1x9000/3550 J333 T840 BGC LG3 LO4	2250	58	75	12488	88,8	141	80+	4000	5,3
DECOR LP LED1x6750/2550 J334 T840 BGC LG3 LO1	2808	58	75	9248	61,6	150	80+	4000	6,6
DECOR LP LED1x8300/3100 J335 T840 BGC LG3 LO2	2808	58	75	11352	77,7	146	80+	4000	6,6
DECOR LP LED1x9750/3650 J336 T840 BGC LG3 LO3	2808	58	75	13380	94,0	142	80+	4000	6,6
DECOR LP LED1x11350/4250 J337 T840 BGC LG3 LO4	2808	58	75	15549	111,1	140	80+	4000	6,6

*Tolerance range for optical and electrical data: $\pm 10\%$. Values apply to an ambient temperature of 25°C. NORTHCLIFFE LIGHTING is constantly developing and improving its products. The right is reserved to change any product specifications without prior notification

Available options:

T830 Colour temperature 3000K, CRI 80+
 T840 Colour temperature 4000K, CRI 80+
 WGC White gloss reflector with clear lens
 BGC Black gloss reflector with clear lens
 WMC White matt reflector with clear lens
 BMC Black matt reflector with clear lens
 MGC Metallic mirror finish reflector with clear lens
 MMC Metallic matt reflector with clear lens
 DALI Driver with DALI interface and switch-control dimming
 DALIsep Driver with DALI interface and with possibility to control down and up light separately

EAIRB-M Master luminaire with integrated smart sensor and driver with Bluetooth communication and grouping possibilities for lighting control

**note - for EAIRB-M options ingress protection IP20*

EAIRB-S Slave luminaire with integrated EAIR type driver for lighting control

**note - max system size 1x EAIRB-M + 3x EAIRB-S*

**note - max wire length from EAIRB-M to last EAIRB-S - 11m.*

**note - Please ask for special models with options EAIRB*

BLT Integrated wireless control unit and driver for lighting control via mobile device (via Bluetooth)

PULL Pull switch device, on/off

PULLDIM Pull switch device and driver with switch-control dimming

**note - For PULL and PULLDIM options luminaire housing is 50mm longer and switch is positioned at the end of luminaire*

MW Integrated microwave (MW) motion sensor with on-off control

**note - For option MW luminaire housing is 72mm longer*

**note - the MW sensor is positioned in the end of the luminaire for lengths up to 1800mm, and in the middle of the luminaire for lengths over 1800mm*

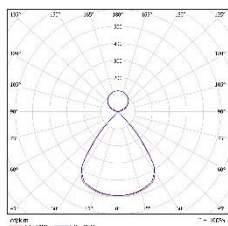
PIR Integrated PIR sensor with on-off control

**note - for option PIR luminaire housing is 50mm longer*

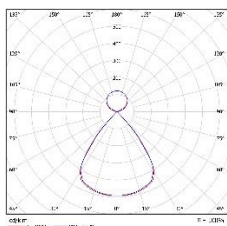
**note - PIR sensor is positioned in the end of the luminaire for lengths up to 1800mm, and in the middle of the luminaire for lengths over 1800mm*

EM3 Emergency version 3 hours
 EM3B Emergency version 3 hours (best available technology)
 EM3A Emergency version equipped with an autonomous testing system, 3 hours
 EM3D Emergency version 3 hours with DALI interface
 1LIN Through wiring single phase $d=1.5 \text{ mm}^2$ with two push-in terminal blocks
 2LIN Through wiring two phases $d=1.5 \text{ mm}^2$ with two push-in terminal blocks
 3LIN Through wiring three phases $d=1.5 \text{ mm}^2$ with two push-in terminal blocks
 Lsep Option that enables to control (on/off) Down and up lights separately
 CBF2-2.0m clear Cable $2 \times 0.75 \text{ mm}^2$ for suspended luminaire up to 2.0 meters, transparent
 CBF2-3.0m clear Cable $2 \times 0.75 \text{ mm}^2$ for suspended luminaire up to 3.0 meters, transparent
 CBF3-2.0m clear Cable $3 \times 0.75 \text{ mm}^2$ for suspended luminaire up to 2.0 meters, transparent
 CBF3-3.0m clear Cable $3 \times 0.75 \text{ mm}^2$ for suspended luminaire up to 3.0 meters, transparent
 CBF5-2.0m clear Cable $5 \times 0.75 \text{ mm}^2$ for suspended luminaire up to 2.0 meters, transparent
 CBF5-3.0m clear Cable $5 \times 0.75 \text{ mm}^2$ for suspended luminaire up to 3.0 meters, transparent
 L for in-line connection end/first luminaire (lengths: 1127/1406/2243/2801mm)
 LL for in-line connection intermediate luminaire (lengths: 1120/1399/2236/2794mm)
 RAL RAL colour

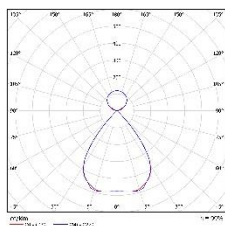
WGC LG3



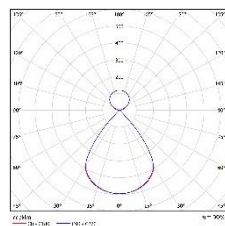
BGC LG3



MGC LG3



MMC LG3



Available accessories:



Product: Suspension MTG KIT SUSI
 Description: Suspension wire set "I" type, 1.5m adjustable, 1pcs
**note - at least 2pcs MTG KIT SUSI for one fitting required. For exact quantity please refer to installation manual*



Product: CAP cable $3 \times 0.75 \text{ 2.0m}$ clear
 Description: Cable $3 \times 0.75 \text{ mm}^2$ for suspended luminaire up to 2.0 meters, transparent



Product: CAP4, light grey/ white/ black
 Description: Square decorative metal cap for hiding cable inlet with suspension wire attachment point, push-in terminals $3 \times 1 \times 1.5 \text{ mm}^2$, light grey/ white/ black



Product: CAP cable clip D6.3mm SET clear
 Description: Cable and suspension wire clip set, 4pcs. For cable diameter up to 6,3mm and wire diameter 1mm



Product: CAP5, light grey/ white/ black
 Description: Square decorative metal cap for hiding cable inlet with suspension wire attachment point, push-in terminals $5 \times 1 \times 1.5 \text{ mm}^2$, light grey/ white/ black