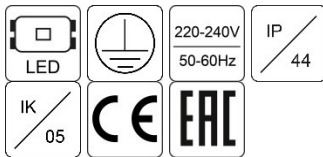
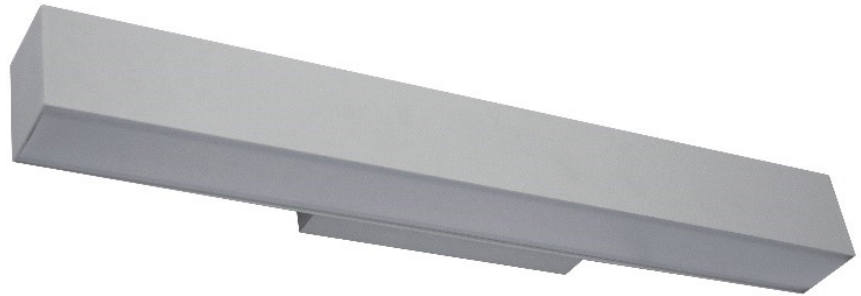


LUPI LED

Diffuser and Wall Luminaires



Description:	Wall mounted decorative LED luminaire Light distribution type: direct/indirect Optical system: opal polycarbonate diffuser Housing: aluminium Colour: light grey (RAL 9006)
General data:	Mains voltage: 220-240V, 50/60Hz LED lifetime, h: 75000/L80B50 Protection class IEC: I Ingress protection code: IP44 Mechanical impact resistance: IK05 Operating temperature range, °C: ta -15...+35
Installation:	On the wall. Push-in terminal, 5x2x2.5mm ²
Environment:	Indoor
Application:	Office, hotel, corridor, bathroom

Product	Length, mm	Width, mm	Height, mm	Luminaire output*, lm	System power*, W	System efficacy*, lm/W	CRI	CCT*, K	Weight, kg
Lupi LED1x800/800 D847 T840 OP LG3	580	85	75	1594	13,6	117	80+	4000	2,00
Lupi LED1x1100/1100 D848 T840 OP LG3	580	85	75	2168	19,6	110	80+	4000	2,00
Lupi LED1x1500/1500 D849 T840 OP LG3	580	85	75	2940	29,2	101	80+	4000	2,00

* Tolerance range for optical and electrical data: ±10%. Values apply to an ambient temperature of 25°C. NORTHCLIFFE LIGHTING is constantly developing and improving its products. The right is reserved to change any product specifications without prior notification

Available options:

DALI	Driver with DALI interface
1G	Strain relief for power supply cable
OP	Opal diffuser with high light transmittance
RAL	RAL colour
T830	Colour temperature 3000K, CRI 80+
T840	Colour temperature 4000K, CRI 80+

